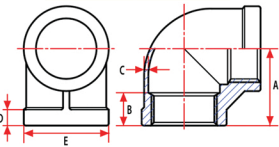


MSS-SP114 HEAVY PATTERN STAINLESS STEEL FITTINGS

ELBOWS - 90°



Item ID 304	Item ID 316	Size	Pkg Qty	Approx Weight	A	B	C	D	E
SS304-60001	SS316-60001	1/8"	25	0.0741	0.74	0.27	0.110	0.20	0.72
SS304-60002	SS316-60002	1/4"	25	0.0871	0.74	0.33	0.124	0.20	0.81
SS304-60003	SS316-60003	3/8"	25	0.1213	0.85	0.36	0.081	0.20	0.96
SS304-60004	SS316-60004	1/2"	25	0.1808	1.02	0.42	0.085	0.24	1.15
SS304-60006	SS316-60006	3/4"	25	0.3086	1.20	0.49	0.104	0.26	1.40
SS304-60010	SS316-60010	1"	10	0.4619	1.38	0.57	0.106	0.29	1.70
SS304-60012	SS316-60012	1 1/4"	10	0.7275	1.61	0.65	0.116	0.33	2.05
SS304-60014	SS316-60014	1 1/2"	5	0.9259	1.77	0.68	0.126	0.36	2.33
SS304-60020	SS316-60020	2"	5	1.4815	2.08	0.73	0.138	0.40	2.82
SS304-60024	SS316-60024	2 1/2"	1	1.9731	2.47	0.89	0.177	0.46	3.15
SS304-60030	SS316-60030	3"	1	3.1526	2.83	0.95	0.187	0.53	3.83
SS304-60040	SS316-60040	4"	1	5.5402	3.53	1.04	0.212	0.63	4.83

DOMESTIC AND IMPORTED FITTINGS

Stainless steel fittings are investment castings and Trenton Pipe carries a full size range that is available in stock from 1/8" – 4" in both 304 and 316 grades of stainless steel.

All fittings are threaded to NPT standard in compliance to **ASME B1.20.1**, castings are made in accordance to **ASTM A351** and all fittings are heat treated and tested in accordance to **ASTM A262**.



(800) 257-9559

Fax: (866) 706-5260

sales@trentonpipe.com